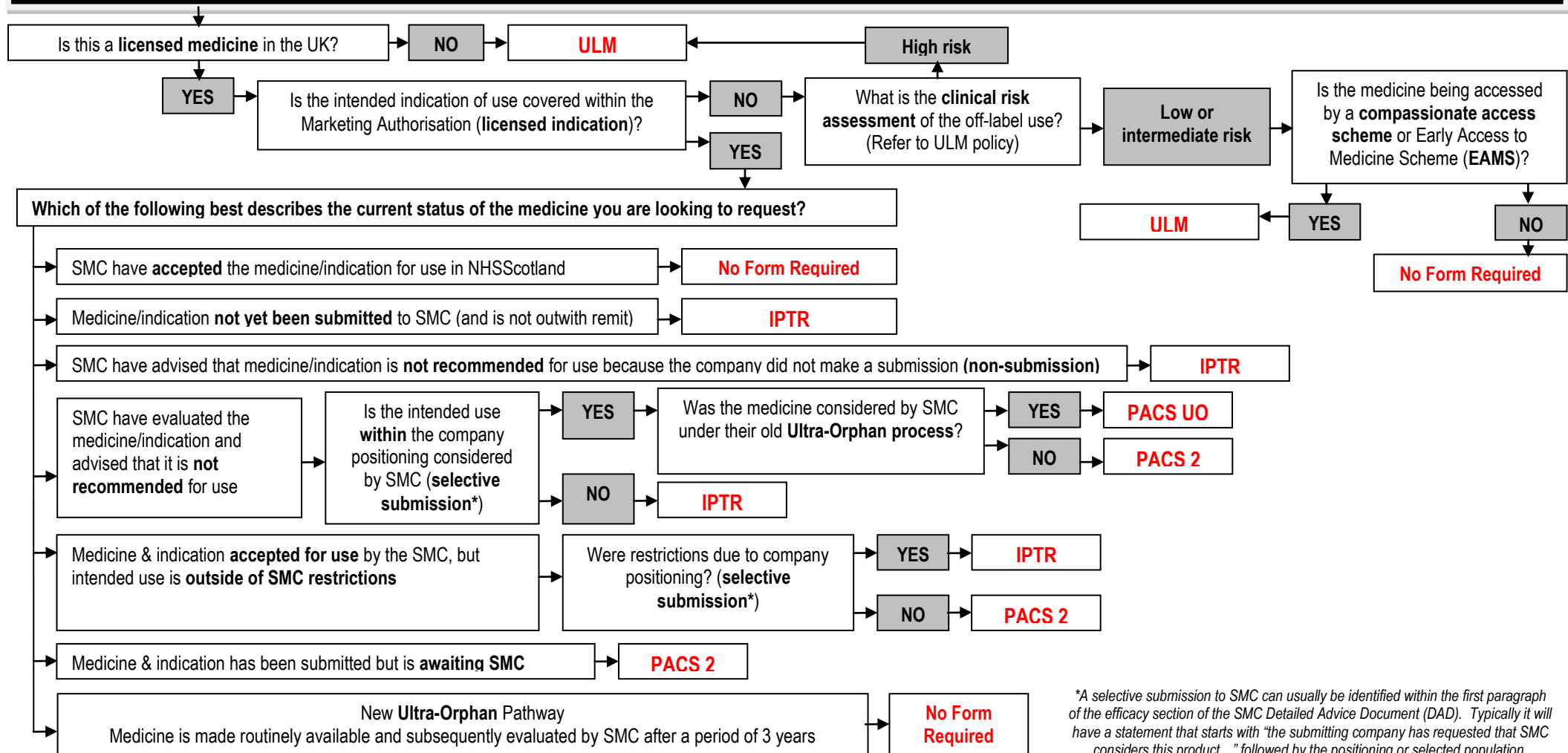


WHICH FORM DO I NEED TO COMPLETE?

Which form do I need to complete?



**A selective submission to SMC can usually be identified within the first paragraph of the efficacy section of the SMC Detailed Advice Document (DAD). Typically it will have a statement that starts with "the submitting company has requested that SMC considers this product..." followed by the positioning or selected population.*

If there is any uncertainty about which form or process to use, contact the Medicines Policy & Guidance Team within Medicines Information on 0141 211 4407 or email ggc.medicines@ggc.scot.nhs.uk